



## European Pilot Integration – Smart Parking

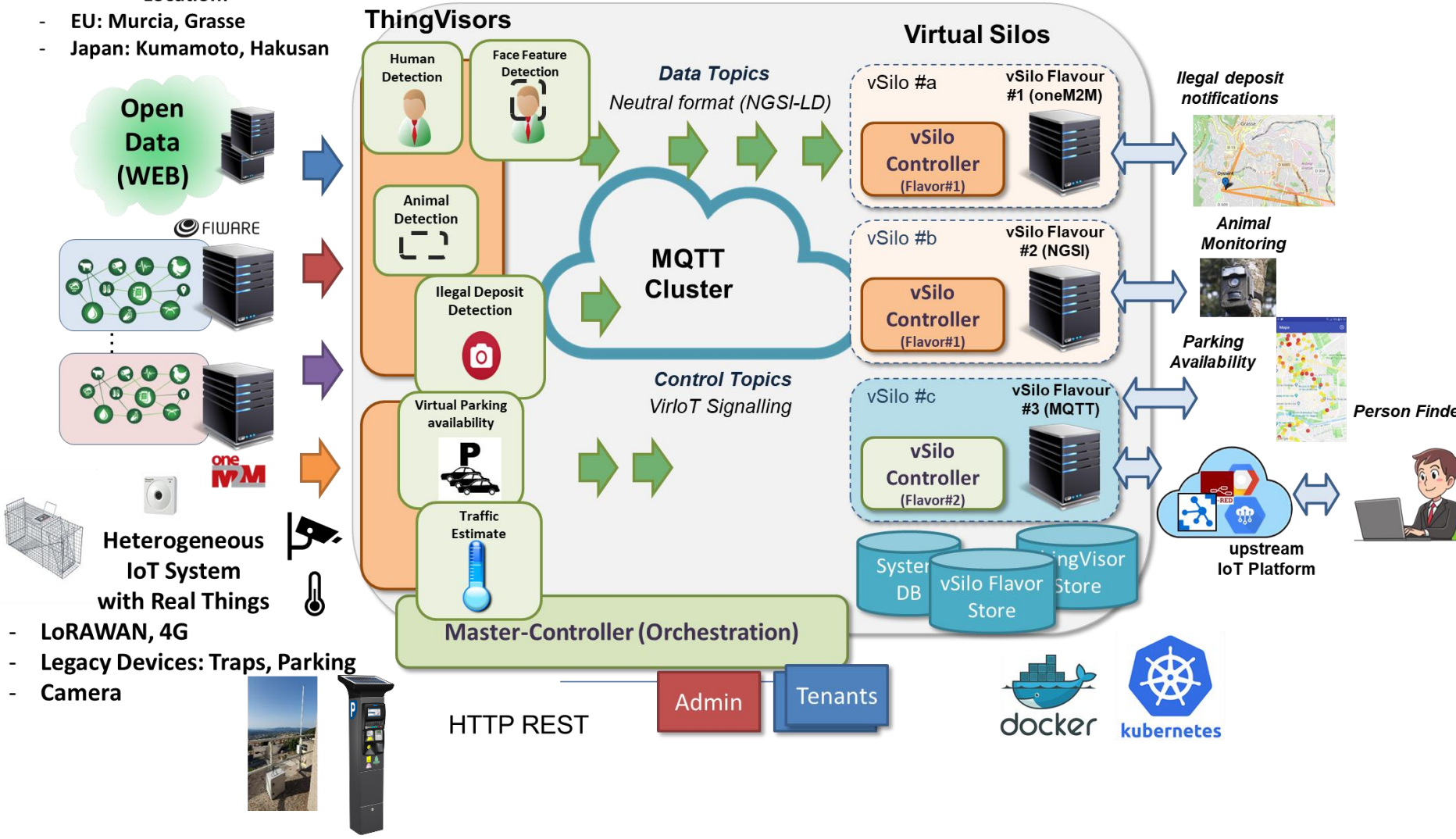
Odin Solutions

Antonio Skarmeta  
skarmeta@odins.es

# Pilots

Location:

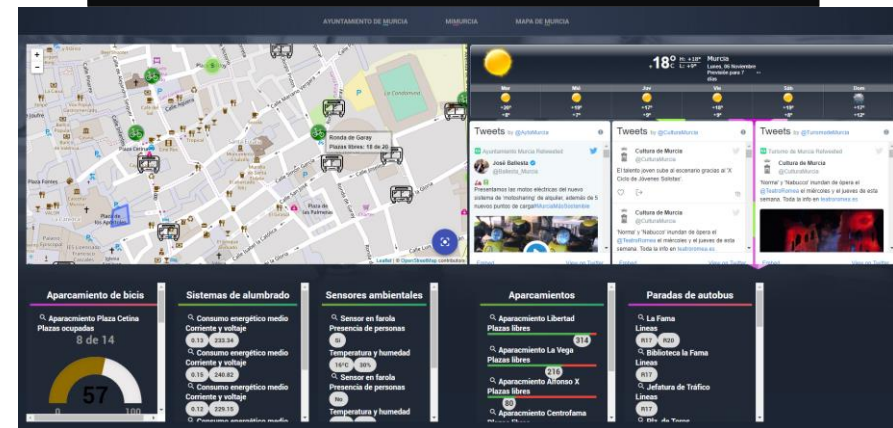
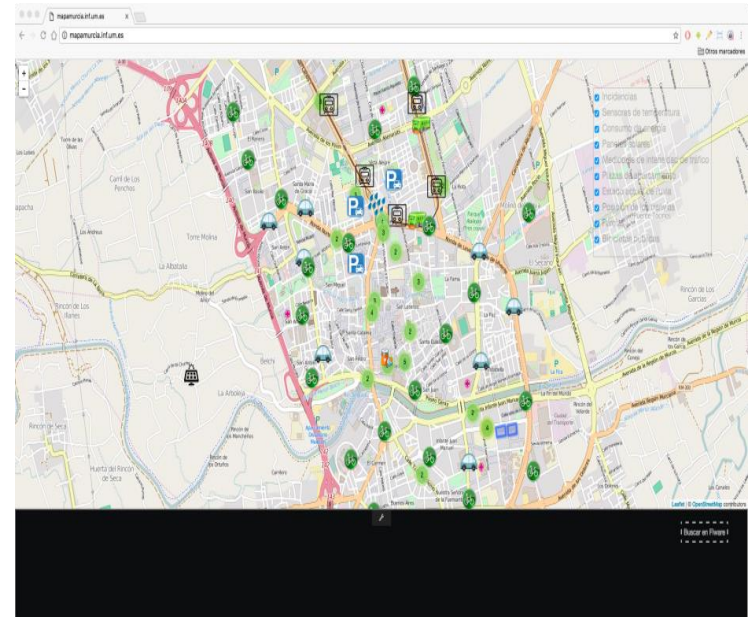
- EU: Murcia, Grasse
- Japan: Kumamoto, Hakusan



- LoRAWAN, 4G
- Legacy Devices: Traps, Parking
- Camera

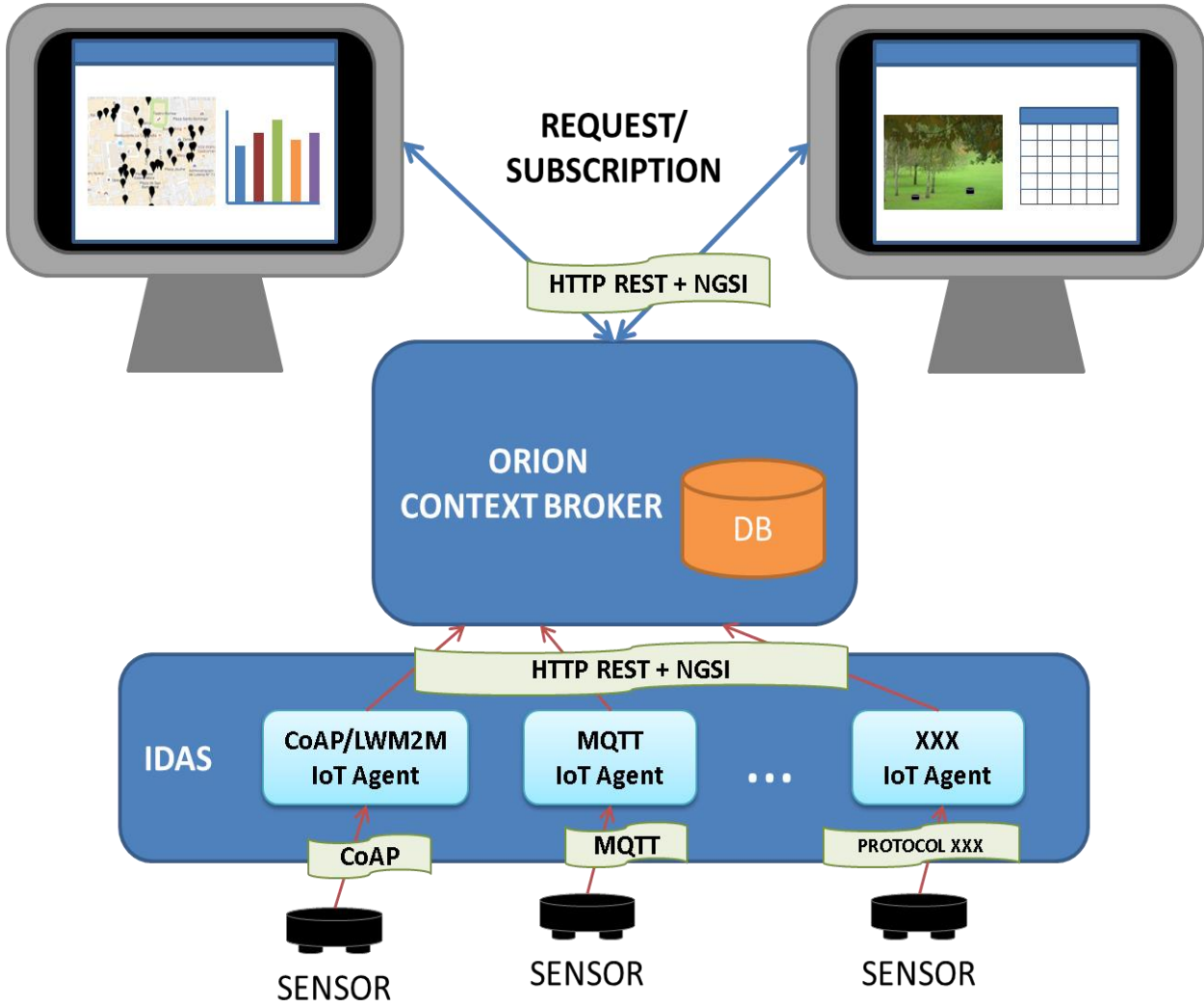
# Murcia: MiMurcia Smart City

- Integrate data from sensors, open data sources and internal database by means of common data model (NSGI)
- Provide facilities for orchestrating new services based on connecting different municipality areas of information
- Create new channels of communication with citizens based on social networks contextualized information
- Increase the efficiency of services and reaction time based on the real time information of the city
- Data publishing layer (OpenData)



# MiMurcia Platform

- Regulated Parking Service and private car parks
- Mix-modal public transport and the use of bicycle
- Traffic management
- Lighting system
- Watering systems for parks and gardens
- Noisy zones detection
- Waste collection
- Incidences of citizens
- Commerce promoting in the centre of the city (iBeacons)

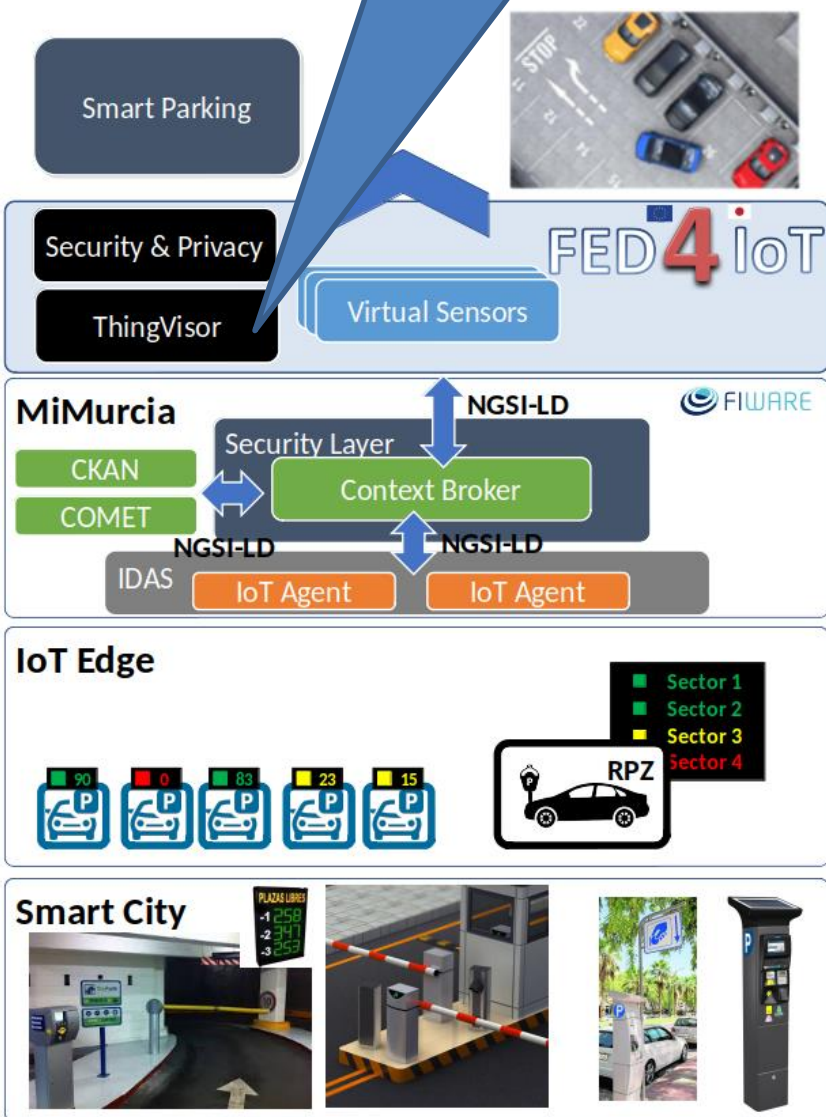


# Smart Parking

- Motivation
  - Reduction of time consuming task of finding free parking spot in a city
- Requirements
  - Solution which could be easily deployed in any city
  - Backend service with standard API
  - Unified data model
  - Easy integration of information from different sources of information
- Approach:
  - NGSI API and data model
  - Make the most of features and advantages of VirloT platform
    - Interoperability
    - Application portability



ThingVisor integrates MiMurcia parking availability information and process it generating virtual sensors according to specific requirements of user:  
SmartParking TV, RPZ TV



# Smart Parking – Murcia

## App & Services

- Smart Parking Application
- Map-based web interface/App
- User specifies selection criteria: destination location, estimated arrival time, estimated parking duration, the maximum permissible distance to the destination location, the maximum price of parking, etc.

## Virtualisation

- NGSIv2 ThingVisor specific for Smart Parking
- Aggregation of information on vThings

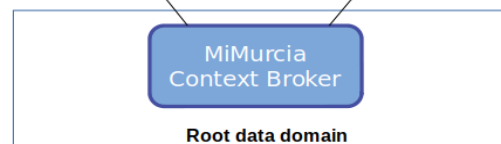
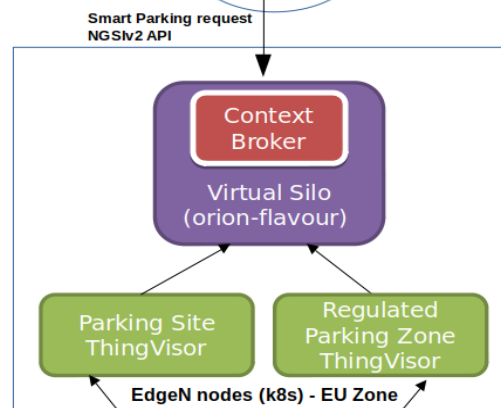
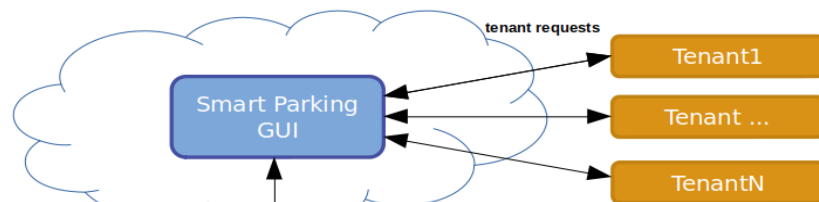
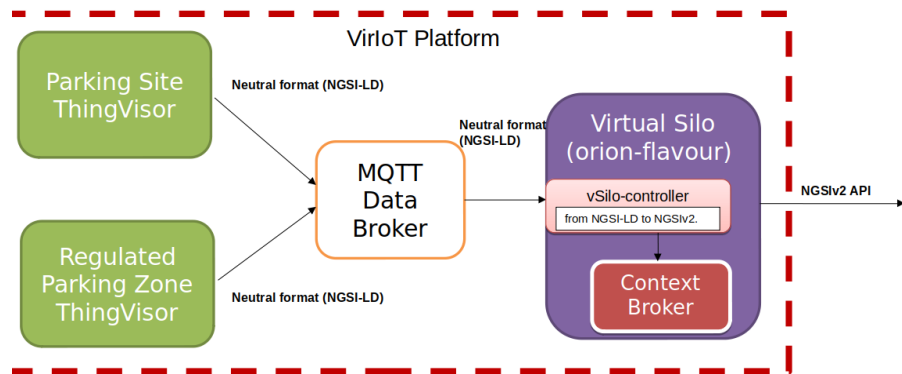
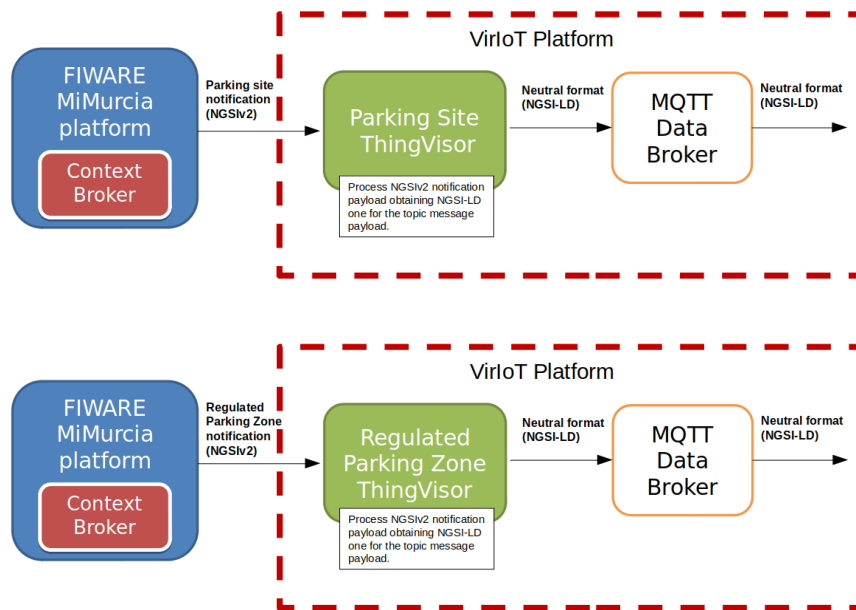
## Root Data Domain

- Provides information about:
- Private parking site availability (every 5 min)
- Regulated Parking Zone tickets (at the end of the day)

## Infrastructure

- Access control devs for parking site
- Parking-meters
- Network communication

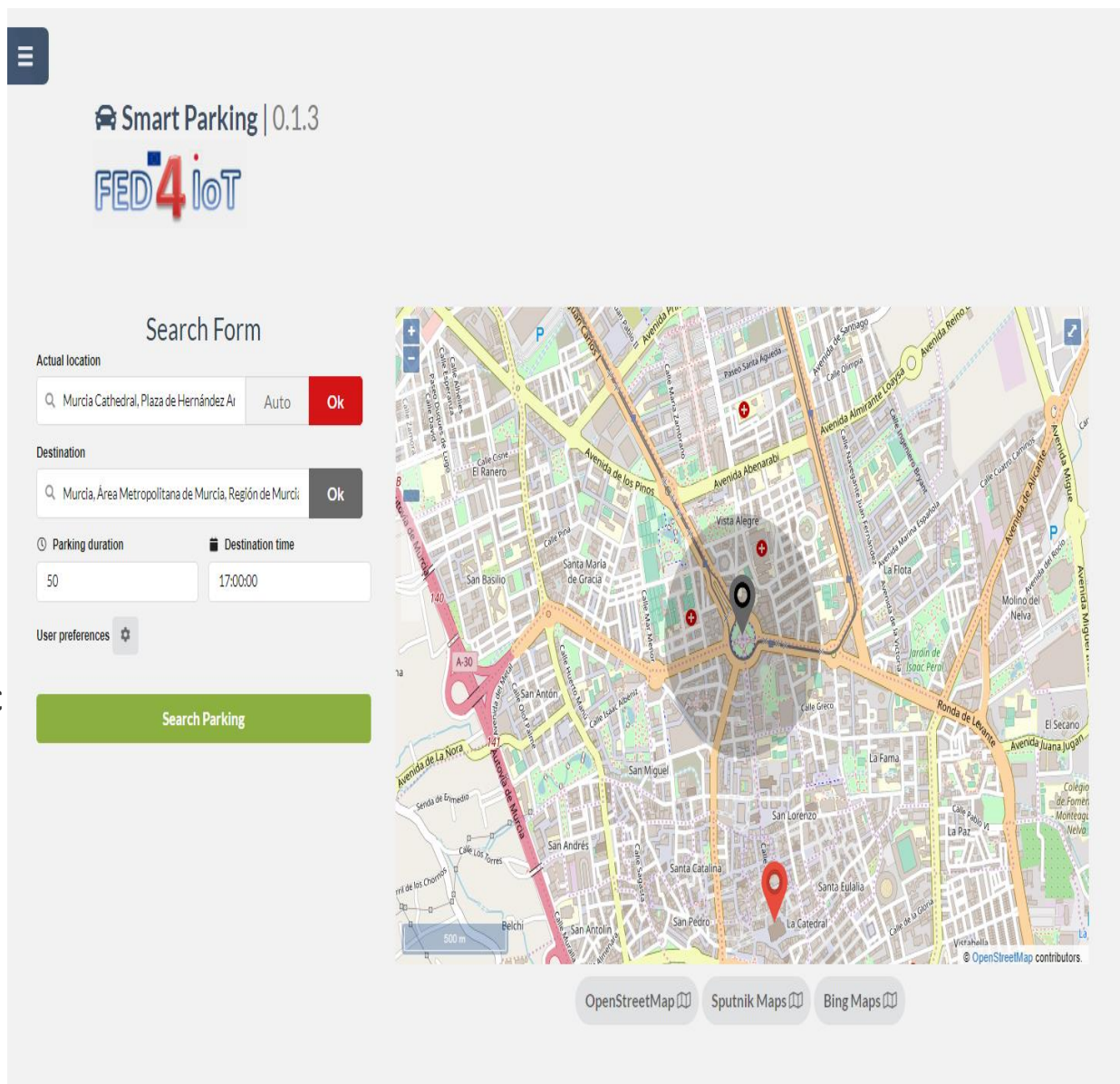
# Smart Parking – Murcia



- Information provided by RootDataDomain (MiMurcia Platform) is integrated into VirloT thanks to the use of two different ThingVisors:
  - Parking Site TV and Regulated Parking Zone TV.
- A vSilo with a FIWARE flavour is deployed to receive this information.

# Smart Parking – Murcia

- Pilot application:
  - Allows user to set:
    - Origin
    - Destination
    - parking duration
    - time of arrival
  - User can also specify other features:
    - max affordable prize
    - the use of electric car
    - mobility restrictions
    - the distance she can go walking





# Smart Parking – Murcia

Smart Parking | 0.1.3

**FED4 IoT**

### Search Form

Actual location

Destination

Parking duration:  Destination time:

User preferences

Maximum cost:  Electric car:

Adapted for disabled:  Car-Wash near:

Max. distance to destination from parking:

Dark mode:

OpenStreetMap | Sputnik Maps | Bing Maps

**Parking 103**

OPTIONS

94 % CHANCES    194 M. DISTANCE    2.1€ COST

ELECTRIC     DISABLED     CAR-WASH

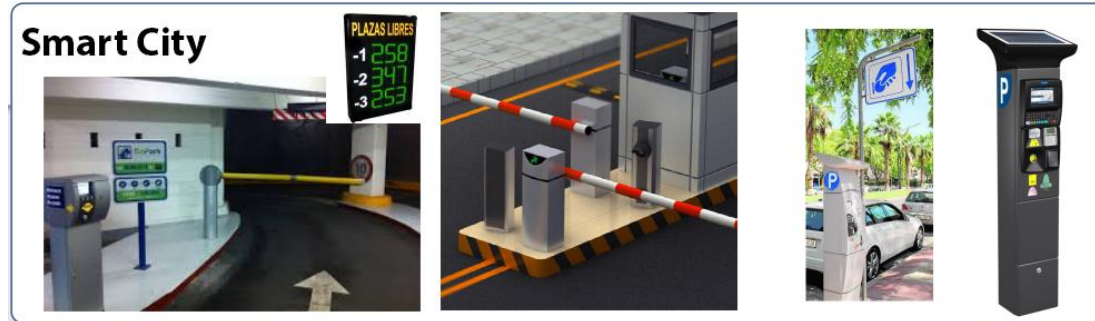
Rating: ★★☆☆☆

### Directions

Drive directions to parking

- Head west on Calle Escultor Salzillo
- Continue slightly right onto Calle González Adalid
- Continue left onto Calle Polo de Medina
- Continue right onto Calle de la Frería
- Turn left onto Gran Vía Escultor Francisco Salzillo
- Make a slight right onto Plaza Martínez Tornel
- Turn right onto Plano de San Francisco
- Turn right onto Calle de Juan de la Cierva
- Continue onto Calle de García Alix
- Continue onto Calle San Andrés
- Go straight onto Calle San Antón
- Enter the roundabout and take the 1st exit onto Plaza de Cast

# Smart Parking – Murcia - Entities



Type	Description
Parkingsite	This entity contains a harmonised description of a parking site.
Policy	This entity contains a harmonised description of a parking site policy.
Sector	This entity contains a harmonised description of a Regulated Parking Zone sector. Geolocation polygon of the sector
Parkingmeter	This entity contains a harmonised description of a Regulated Parking Zone parking meter. Related sector. Geolocation

# Conclusion

- Interoperability
  - Enforce the concept of neutral format from the point of view of customers
  - Independent on the Root Data Domain technology
    - APIs and data models
- Reuse/sharing of real things
  - Exploiting different functionality of IoT devices
  - Real thing slicing
- Application portability
  - Independent of the city or country
  - Easy deployment

# Thank you Questions?



Antonio Skarmeta  
skarmeta@odins.es

